

Product # _____ Type _____ Date _____

Project Name _____

Project Location _____ Prepared By _____

Smart™ Area 300

Smart™ Light Specifications

The 300 watt Smart™ Area is designed to replace HID light sources of up to 1000 watts. This is accomplished with sealed high brightness light modules with precision control TIR type optics.

Construction

Housing is die-formed made from low-copper 5052 aluminum, heavy duty, structurally rigid and vibration resistant. Heatsink fins are 0.040" thick made from low copper aluminum 5052 alloy with maximum contact with the housing for maximum heat dissipating surface area for the efficient cooler operation. Five available mounting options. Suitable for Wet Locations.

Optics/Lens

The 300 watt Smart™ Area contains 3 x 100 watt IP67 sealed light modules and are easily replaceable. LED Modules are available in TypeII TypeIII TypeIV and TypeV distribution patterns.

Electrical

High power LED source, with performance of greater than 100 lpw (lumens per watt). Available in range of Color Temperature 2700K-5000K, CRI of 70 or greater. LED Drivers: UL/CSA recognized component to meet UL8750 & EN61347 (USR/CNR - E328335). Suitable for input power at 100-277VAC, Minimum power factor >0.95 with an operating temperature range of -22-140 degrees F / -30C to +55C. Dimmable and motion sensor control compatible.

Finish

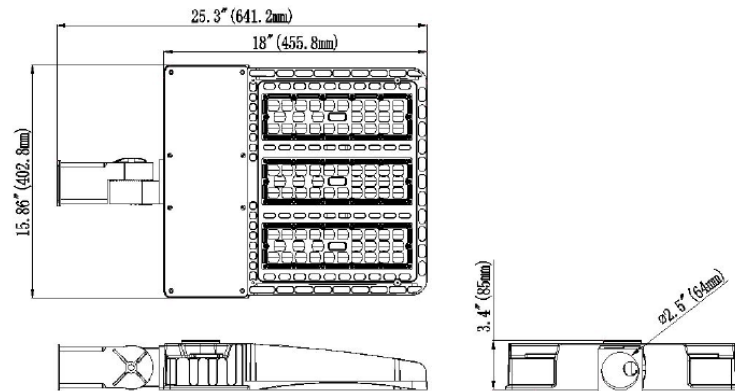
Dark Bronze finish. Other optional colors available on request.

Warranty and Certifications

5 year limited warranty for LED Light Engine and Driver, 7 years for housing. 50,000 hours @ 25°C L70 LED Illumination per LM-80. cULus Wet Locations in compliance with UL 1598 and CSA C22.2 NO. 250.0 standards. IP65, IP67 upgrade option. Suitable for indoor/outdoor wet or damp location use. DLC listed and Lighting Facts.



Adjustable Slipfitter Shown



Fixture EPA: 1.0 sq. ft.

Weight: 28 lbs.



Ordering Guide

MODEL	TOTAL LED POWER	CCT COLOR TEMP	LIGHT BEAM SPREAD	INPUT VAC	LIGHTING CONTROL	GLARE CONTROL	MOUNTING TYPE
SMA-V	300	50	2	U	D		4
	300 = 300W	50 – 5000K (standard) 40 – 4000K 30 – 3000K 27 – 2700K	2 = Type II 3 = Type III 5 = Type V	U = Universal 100V to 277V 34 = 347V 48 = 480V	D = Dimming ND = Non Dimming PC = Photo Control	**Consult factory for available options	4 - adjustable knuckle/ slipfitter 6 - arm mount 7 - wall mount RP - Round Pole Adapter TR - Adjustable Trunnion

Note: Due to continued efforts to improve our products, specifications are subject to change without notice.

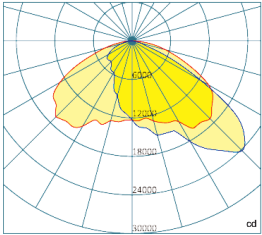


835 Industrial Drive, Elmhurst, IL 60126 708.681.4330 www.nslights.com

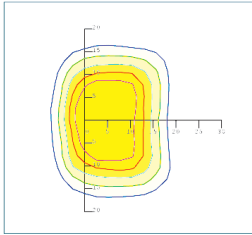
Smart™ Area 300

Photometrics

TYPE III LENS



0.0~180.0
90.0~270.0



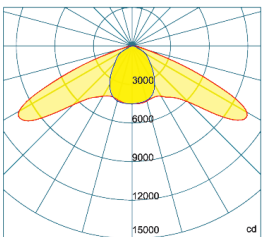
Mounting Hight 13m, 0 Tilt,
50LUX-5LUX

Illumination-Type III Lens Beaming Angle

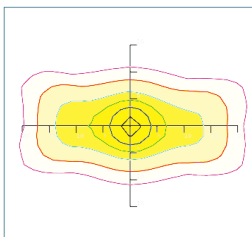
Height	Rectangular Light Spot	LUX
5m	9×24m	82LUX
6m	11×29m	60LUX
7m	13×34m	45LUX
8m	14×39m	35LUX
9m	15×43m	28LUX

Luminous Flux (IES)	30,137 lm
Light Efficacy (IES)	100 lm/W
IES Classification	Type III
BUG Rating	B3-U2-G3
Cutoff Classification	Full Cutoff

TYPE II LENS



0.0~180.0
90.0~270.0



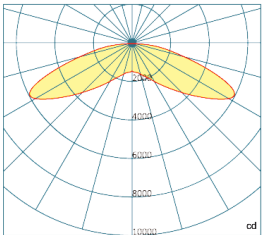
Mounting Hight 9m, 0 Tilt,
50LUX-5LUX

Illumination-Type II Lens Beaming Angle

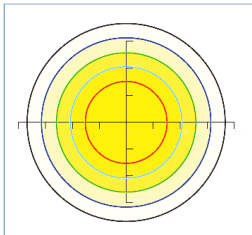
Height	Rectangular Light Spot	LUX
7m	13×34m	84LUX
8m	15×39m	65LUX
9m	16×43m	52LUX
10m	18×48m	42LUX
11m	20×53m	35LUX

Luminous Flux (IES)	30,137 lm
Light Efficacy (IES)	100 lm/W
IES Classification	Type II
BUG Rating	B3-U2-G3
Cutoff Classification	Semi Cutoff

TYPE V LENS



0.0~360.0



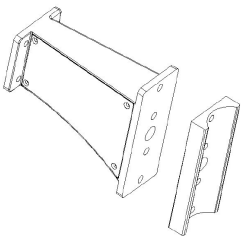
Mounting Hight 8m, 0 Tilt,
50LUX-5LUX

Illumination-Type V Lens Beaming Angle

Height	Beam Diameter	LUX
7m	φ 32m	86LUX
8m	φ 37m	67LUX
9m	φ 41m	55LUX
10m	φ 47m	44LUX
11m	φ 51m	37LUX

Luminous Flux (IES)	30,137 lm
Light Efficacy (IES)	100 lm/W
IES Classification	Type V
BUG Rating	B4-U0-G4
Cutoff Classification	Semi Cutoff

Round Pole Adapter



Trunnion Mount



Photocell

