

Product # _____ Type _____ Date _____

Project Name _____

Project Location _____ Prepared By _____

Constellation 300W

300W LED Constellation Highbay

The 300 watt LED Constellation Highbay has been engineered to efficiently light any large interior space. It provides specification grade optical performance using high efficacy LED and high power factor LED drivers.

Construction

The LED Constellation Highbay has flexible modular design made out of aluminum alloy.

Optics/Lens

The 300 watt LED Constellation Highbay utilizes IP66 sealed light modules. Available in 90, 70x135, 30x100, 110, 150, and 60x100 degree beam pattern.

Electrical

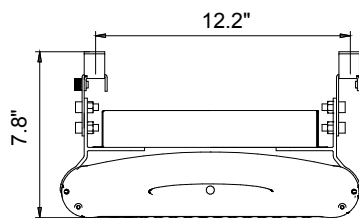
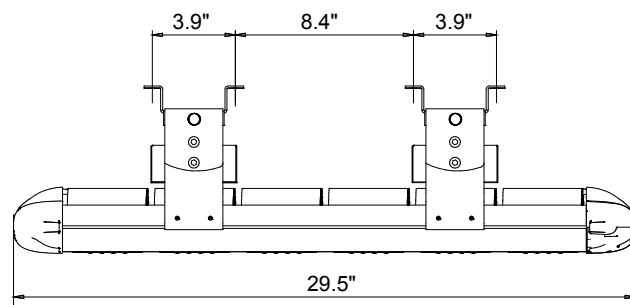
Performance greater than 100 lumens per watt. Standard Color Temperature 5500K, CRI of 80 or greater. Other optional color temp and CRI available on request. LED Drivers: UL/CSA recognized component to meet UL8750 & EN61347 (USR/CNR -E328335). Suitable for input power at 100-277 VAC. Minimum power factor over 0.95 with an operating temperature range of -22F-113F (-30C-45C). Available dimming options include: PWM, 1-10V, Microwave sensor, or Infrared sensor.

Product Applications

The LED Constellation Highbay is designed to efficiently light any large interior space such as warehouses and manufacturing facilities, convention centers/sporting arenas, big-box retail stores, cold storage facilities and gymnasiums.

Warranty and Certifications

5 years for LED Light Engine and Driver 50,000 hours L70 LED Illumination per LM-80. cETLus wet locations in compliance with UL 1598 and CSA C22.2 NO. 250.0 standards. IP66 rated. Suitable for indoor/outdoor wet or damp location use. DLC listed.



Weight: 24.3lbs/
11kg



Ordering Guide

MODEL	TOTAL LED POWER	SERIES	CCT COLOR TEMP	LIGHT BEAM SPREAD	INPUT VAC	LIGHTING CONTROL	MOUNTING OPTION
Con	300 = 300W	HB	2500-5500K* 4500-5500K Standard *+/-350K	90° 110° 150° 70x135° 30x100° 60x100°	U = Universal 120V to 277V 48 = 480V* *Consult factory for 48	ND = Non Dimming D = Dimming 1-10V PWM=PWM MS=Microwave Sensor IS=Infrared Sensor	SM- Surface Mount HK- Hook/Chain Mount HB-Universal Hanging Bracket

Note: Due to continued efforts to improve our products, specifications are subject to change without notice.

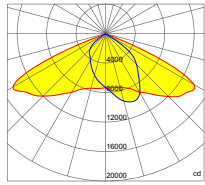


835 Industrial Drive, Elmhurst, IL 60126 708.681.4330 www.nslights.com

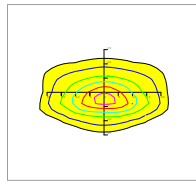
Constellation 300W

Photometrics

70×135 DEGREE LENS



0.0~180.0
90.0~270.0

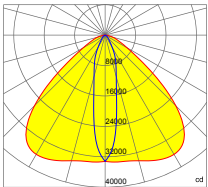


Mounting Height 13m, 0 Tilt,
50LUX-5LUX

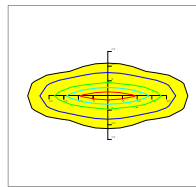
Illumination-70/135 Degree Beam Angle		
Height	Rectangular Light Spot	LUX
8m	15×39m	112LUX
9m	16×43m	89LUX
10m	18×48m	73LUX
11m	20×53m	61LUX
12m	22×58m	51LUX

Beam Angle (50% max)	70×135 DEG
Field Angle (10%)	100×160 DEG
Luminous Flux (IES)	30,000 lm
Light Efficacy (IES)	100 lm/W
Cutoff Classification	Cutoff

30×100 DEGREE LENS



0.0~180.0
90.0~270.0

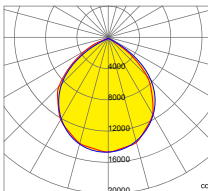


Mounting Height 13m, 0 Tilt,
50LUX-5LUX

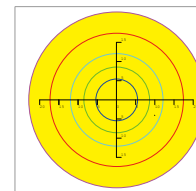
Illumination30/100 Degree Beam Angle		
Height	Rectangular Light Spot	LUX
9m	4×17m	314LUX
10m	4×19m	254LUX
11m	5×21m	209LUX
12m	5×22m	176LUX
13m	6×24m	149LUX

Beam Angle (50% max)	30×100 DEG
Field Angle (10%)	50×120 DEG
Luminous Flux (IES)	30,000 lm
Light Efficacy (IES)	>100 lm/W
UGR	11/38
Cutoff Classification	Semi-Cutoff

90 DEGREE LENS



0.0~180.0
90.0~270.0

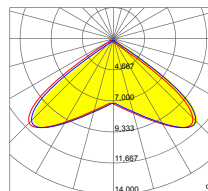


Mounting Height 25m, 0 Tilt,
50LUX-5LUX

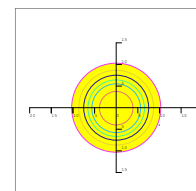
Illumination-90 Degree Beam Angle		
Height	Beam Diameter	LUX
9m	φ 24m	133LUX
10m	φ 28m	109LUX
11m	φ 31m	90LUX
12m	φ 34m	77LUX
13m	φ 36m	65LUX

Beam Angle (50% max)	90 DEG
Field Angle (10%)	130 DEG
Luminous Flux (IES)	30,000 lm
Light Efficacy (IES)	100 lm/W
UGR	27
Cutoff Classification	Cutoff

110 DEGREE LENS



0.0~180.0
90.0~270.0

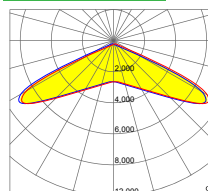


Mounting Height 10m, 0 Tilt,
50LUX-5LUX

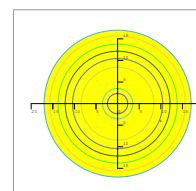
Illumination-110 Degree Beam Angle		
Height	Rectangular Light Spot	LUX
2m	4.0×4.3m	1785LUX
4m	8.0×8.6m	446LUX
6m	12.0×13.0m	198LUX
8m	15.9×17.3m	116LUX
10m	19.9×21.6m	71LUX

Beam Angle (50% max)	110 DEG
Luminous Flux (IES)	30,000 lm
Light Efficacy (IES)	100 lm/W
Cutoff Classification	Cutoff

150 DEGREE LENS



0.0~180.0
90.0~270.0

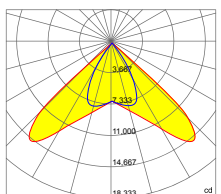


Mounting Height 10m, 0 Tilt,
50LUX-5LUX

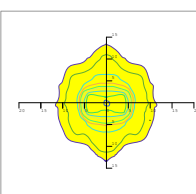
Illumination-150 Degree Beam Angle		
Height	Rectangular Light Spot	LUX
2m	1.8×5.3m	909LUX
4m	3.7×10.7m	227LUX
6m	5.5×16.0m	101LUX
8m	7.4×21.4m	57LUX
10m	9.2×26.7m	36LUX

Beam Angle (50% max)	150 DEG
Luminous Flux (IES)	30,000 lm
Light Efficacy (IES)	100 lm/W
Cutoff Classification	Cutoff

60 x 100 DEGREE LENS



0.0~180.0
90.0~270.0



Mounting Height 10m, 0 Tilt,
50LUX-5LUX

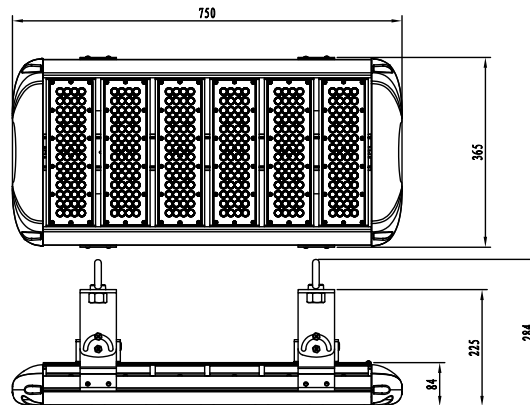
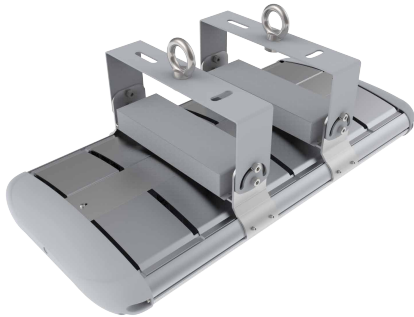
Illumination-60x100 Degree Beam Angle		
Height	Rectangular Light Spot	LUX
2m	1.5×2.2m	2974LUX
4m	2.9×4.4m	744LUX
6m	4.4×6.6m	330LUX
8m	5.8×8.7m	186LUX
10m	7.3×10.9m	119LUX

Beam Angle (50% max)	60x100 DEG
Luminous Flux (IES)	30,000 lm
Light Efficacy (IES)	100 lm/W
Cutoff Classification	Cutoff

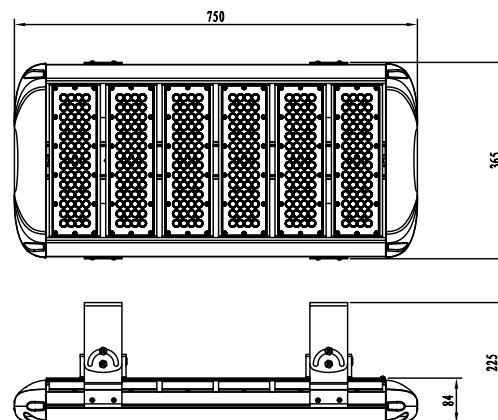
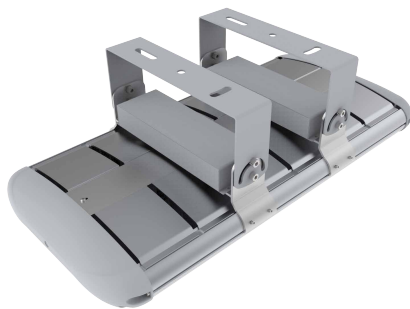
Constellation 300W

Mounting Options

Hook/Chain Mount



Universal Hanging Bracket



Surface Mount

