

### Construction

HOUSING: Die-cast aluminum, one piece heavy duty, structurally rigid and vibration resistant; white, polyester powder coat finish. Optional other finishes are available.

LENS DOOR ASSEMBLY: Minimum 1/8" thick tempered glass lens, thermal and impact resistant, sealed with doorframe and housing using extruded, memory retentive silicone gasket. The door frame is die-cast aluminum.

### Optical System

Optical system is a precision die formed specular segmented aluminum and designed for high performance controlled beam and low glare. Available modular optical systems for IES Type I, II, III, IV and V square.

### Electrical Components

LAMPHOLDER shall be glazed porcelain mogul base with spring loaded center contact; Nickel plated copper screw shell with anti-vibration grip. Rated 4KV, 600V.

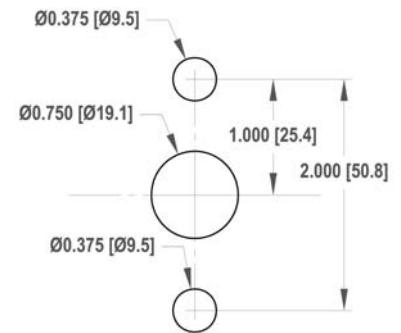
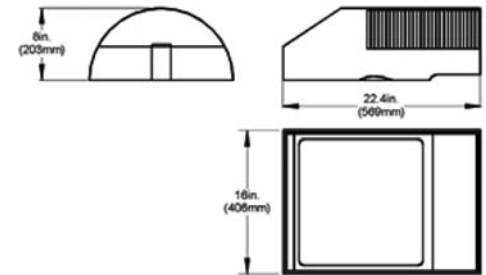
BALLAST shall be high power factor with reliable lamp starting temperature below 40°F for HPS and -20°F for MH. Ballast coil windings are copper with class H insulation.

### Mounting

Heavy duty arm mount to wall or pole at various heights.

### Listings

UL 1598 suitable for indoor/outdoor.



Arm Mounting Detail

Ordering Example							
Unit	Wattage	Optics	Mounting	Lamp Style	Input Voltage	Ballast Style	Option
AAL	6	3	1	T15	MT	H	SIF
Architectural	3 - 175	1 - Type 1	1 - Arm to pole	T15 - T15	MT - Multi-volt	H - C&C	HS - House
Area Light	4 - 250	2 - Type II	2 - Arm to wall	ED18 - ED18	120 - 120V	E - Electronic, G12	Side Shield
	5 - 200	3 - Type III		ED28 - ED28	208 - 208V		SIF - Single
	6 - 400	4 - Type IV			240 - 240V		Inline Fuse
					277 - 277V		DIF - Double
					347 - 347V		Inline Fuse
					480 - 480V		PE - Photo Cell
							PL - Polycarbonate Shield